



NorthHigh

Connecting your laptop to Mackay North State High School

Connecting the laptop to Mackay North State High School network is completed by students and their family at home. This process, called Onboarding, will configure appropriate settings on the laptop to allow secure connection to the schools WI-FI network using a Microsoft product called Intune. Once connected to the WI-FI network, students will be able to access the secure and filtered internet connection at school, connect to printers in the Resource Centre, and download school supplied software and other resources. Below is a listing of what school administration staff can and cannot see on connected devices.

<p>Your school can only see information that is relevant to the school:</p> <ul style="list-style-type: none">• Device owner• Device name• Device model• Device manufacturer• Operating system and version eg: iOS 13 or Windows 10 /11• App inventory and App names, like Microsoft Office 365• On student and staff's personal devices the school can only see school managed Apps• Device serial number and IMEI	<p>Your school does not monitor student's use of the device</p> <ul style="list-style-type: none">• Cannot see your child's personal information• Cannot see what your child is doing on their device• Does not track student's locations / device location• Does not provide information on personally installed applications• Does not allow uninstalling of any applications including your child's own applications• Home Network cannot be seen• Calling and web browsing history• Email and text messages• Contacts• Calendars• Passwords• Pictures, including what's in the photos app or camera roll• Files
--	---

These instructions will show you how to onboard a BYOx Windows device. This process may take up to 15 minutes to complete.

Before you start, please have your students school supplied email address and password ready.

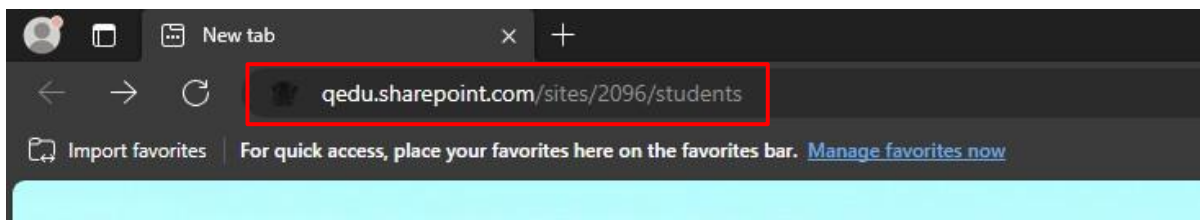
If you do not have this information, you will not be able to successfully complete the installation. Please contact Technology/IT Support to obtain these details.

These instructions are for Windows 11. You may find some of the screens look different to the ones provided here if you have an older version of Windows 11, or there have been changes made to Intune. Instructions for connecting can also be accessed from our schools website in the [Curriculum – Bring Your Own Device](#) section.

Please note: If you have any problems with onboarding, please contact Technology/IT Support for assistance.

Step 1 – Add Student Homepage

1. Open a web browser (Edge, Chrome, Firefox)
2. Navigate to <https://qedu.sharepoint.com/sites/2096/Students/> (*you will need to type this*)



3. If prompted, please enter your username, password, accept the terms and conditions, and Sign in.

Managed Internet Service

Sign in with your username and password

Username * mstaf78

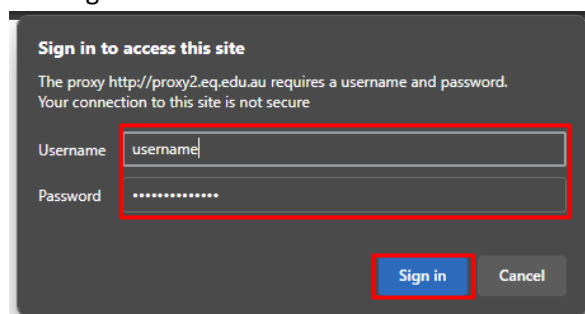
Password *

☒ I agree to the [conditions of use](#)

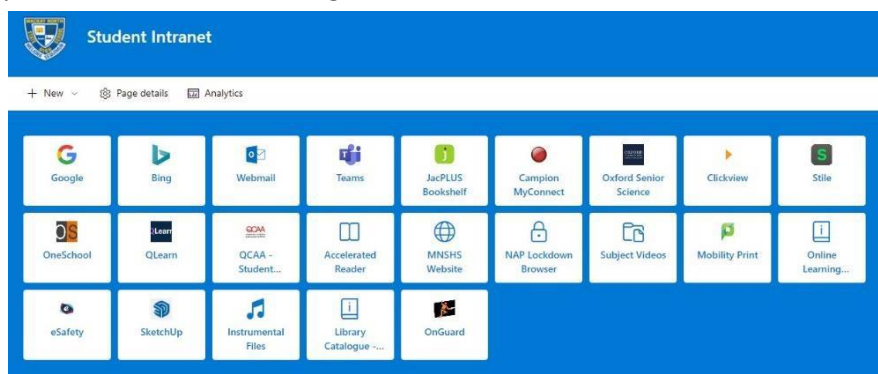
Sign in

[Change my password](#)

4. When prompted for proxy please sign in



5. Once signed in you should see the following website



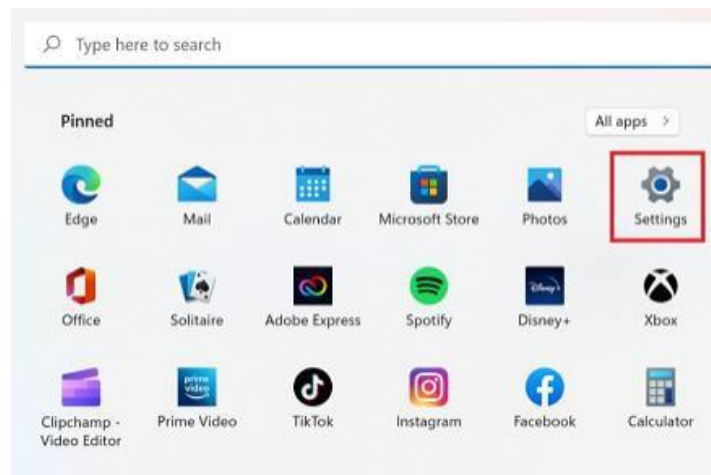
6. Favourite or bookmark the website so you are easily able to access it in the future

Step 3 – Enrol in InTune

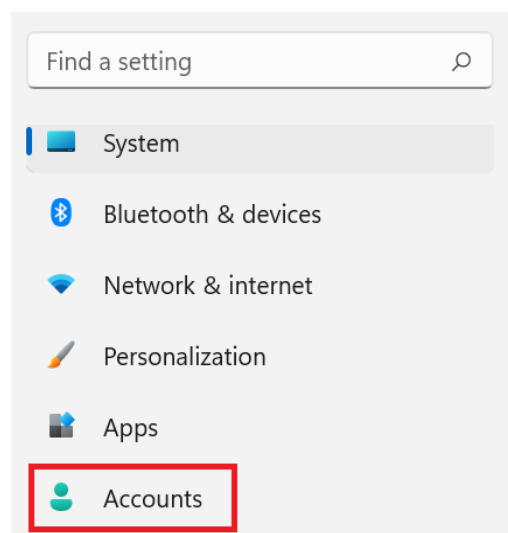
1. Select the Windows icon at the bottom of your screen



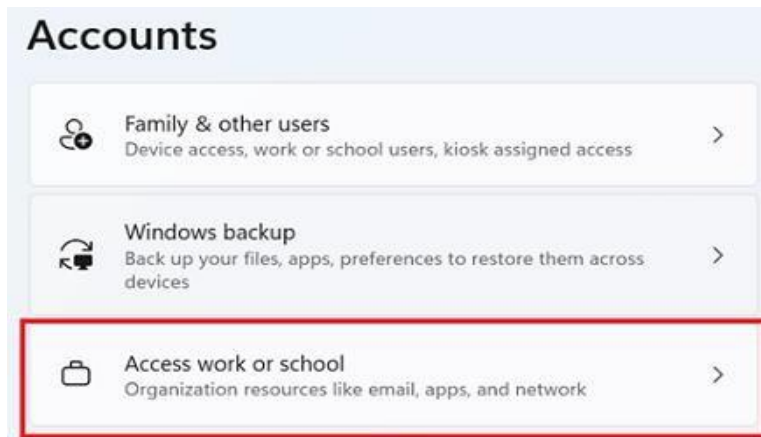
2. Select the Settings icon



3. Select Accounts



4. Select Access work or school and click Connect. If your account is already listed, select it and then select Disconnect. Then select Connect.



5. Enter your school email address and select Next.

Set up a work or school account

You'll get access to resources like email, apps, and the network. Connecting means your work or school might control some things on this device, such as which settings you can change. For specific info about this, ask them.

mstaff78@eq.edu.au

Next

6. Please enter your username, password, accept the terms and conditions, and Sign in.

Managed Internet Service

Sign in with your username and password

Username * mstaf78

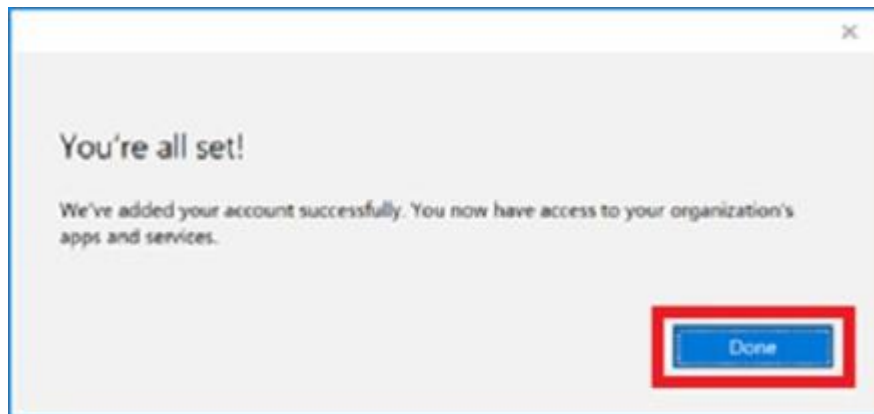
Password *

☒ I agree to the [conditions of use](#)

Sign in

[Change my password](#)

7. Please select Done.



Device setup is now complete

Please leave your laptop on and connected to the internet for 15 minutes afterwards to ensure the syncing process has completed. Once the 15 minutes is up, please restart the device and sign back in. You may be asked to reset your password at this stage.

As your laptop now automatically connects to the Mackay North State High School network, secure login to your laptop is necessary. This is to protect both yourself and other users of the our schools network. If your password is not strong enough, or is not able to be checked, then you will be prompted to reset your password. You will need to create a password that meets the following requirements:

- The length of the password/passphrase must be at least 8 characters.
- The password cannot contain all or part of the user's account name.
- The password must contain characters from three of the following four categories:
 - English uppercase characters (A through Z)
 - English lowercase characters (a through z)
 - Base 10 digits (0 through 9)
 - Non-alphabetic characters (for example, !, \$, #, %)

Congratulations, your laptop is now setup and configured to automatically connect to Mackay North State High School network. Your laptop will connect to the EQNET Wi-Fi network whenever you are school.